

15 Popeshead Court Peter Lane YO1 8SU

£995 PCM

1



1



1



B



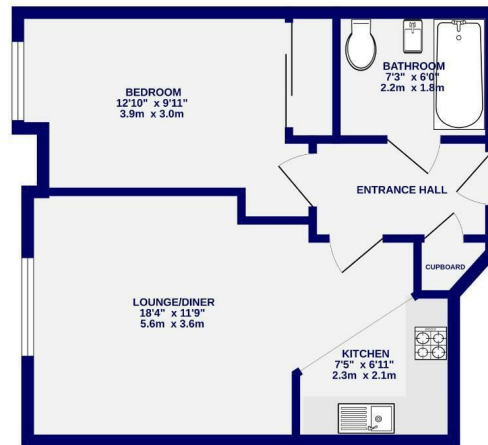
Located right in the heart of the city centre is this one bedroom apartment. Offered unfurnished the property comprises entrance hall, open plan living / kitchen with ceramic tiled floor, integrated dishwasher, washing machine, fridge/freezer, stainless steel electric oven/hob. Master bedroom with fitted mirrored wardrobes. Bathroom with shower over the bath. Electric storage heating. Lift. No parking.

Available 19th June.

Council Tax Band B / 12 month tenancy / Deposit £1095 / EPC B.



2ND FLOOR
425 sq.ft. (39.5 sq.m.) approx.



TOTAL FLOOR AREA - 425 sq ft (39.5 sq m) approx.
While every effort has been made to ensure the accuracy of the figures, measurements of rooms and any other details are approximate. It is advised that you view the property with your agent if you are interested.
Read more and responsibilities. Subject to our terms, conditions and disclaimers. This plan is for illustrative purposes only and should not be used for any promotional purposes. The artwork, layout and appearance shown here is for illustrative purposes and is subject to change without notice.
Made with Mapbox ©2023



Ashtons Lettings



01904 731404



lettings@ashtonsnet.com

